

Pablo®  
CIRCA

# CIRCA

## DESCRIPTION

Circa's revolutionary flat-panel LED light source combines seamless movement with warm and balanced illumination for any environment and every task. With its 45° shade tilt and 360° shade rotation, Circa redefines the ambient lighting category. Available in table, floor, wall and pendant models.

## DESIGNER

Pablo Studio 2013

## MATERIALS

- ABS shade
- Polycarbonate lens assembly
- Aluminum stem
- ABS base with steel insert (Circa Table only)
- Steel base (Circa Floor only)
- Aluminum / steel pedestal (Circa Floor only)
- ABS canopy (Circa Pendant only)
- ABS wall mount cover (Circa Wall only)
- Steel mounting hardware (Circa Pendant and Wall only)

## FEATURES

- 360° shade rotation
- 45° shade tilt
- 4-stage dim control
- USB charging port (Circa Table, Floor and Wall)
- Glare-free illumination
- Ships flat-packed

## SPECIFICATIONS

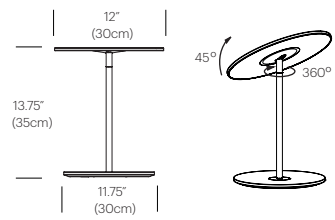
- Voltage: 120/220V 60Hz
- Power Consumption: 11W
- Color temperature: 2700K
- Luminosity: 380 Lumens
- Luminaire efficacy: 35 Lumens/Watt
- Color Rendition Index: 85 CRI
- 50K hour lifespan
- Cord length: 8' (244cm)
- Global multi-plug adapter available



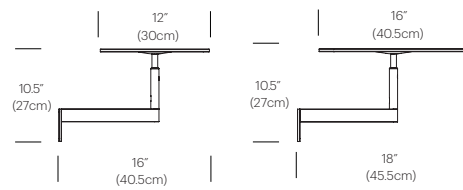
**Pablo®**

# DIMENSIONS

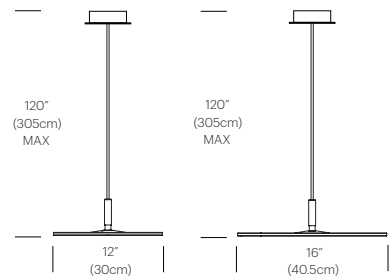
## CIRCA TABLE



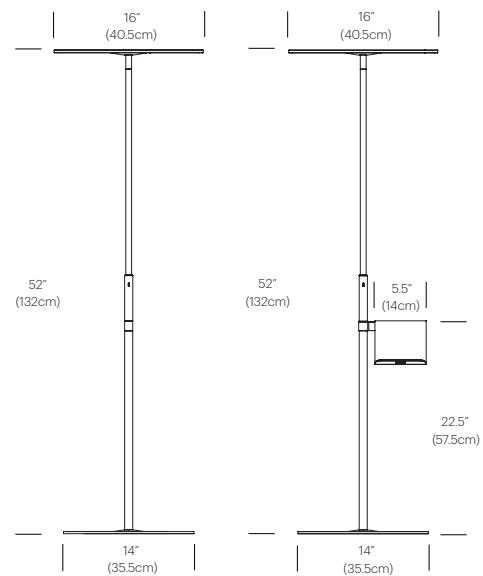
## CIRCA WALL



## CIRCA PENDANT



## CIRCA FLOOR



# FINISH OPTIONS



**spencer interiors**  
 vancouver bc canada  
 telephone: 604.736.1378  
 www.spencerinteriors.ca

**Pablo®**

888 MARIN STREET SAN FRANCISCO, CA 94124  
 PABLODESIGNS.COM