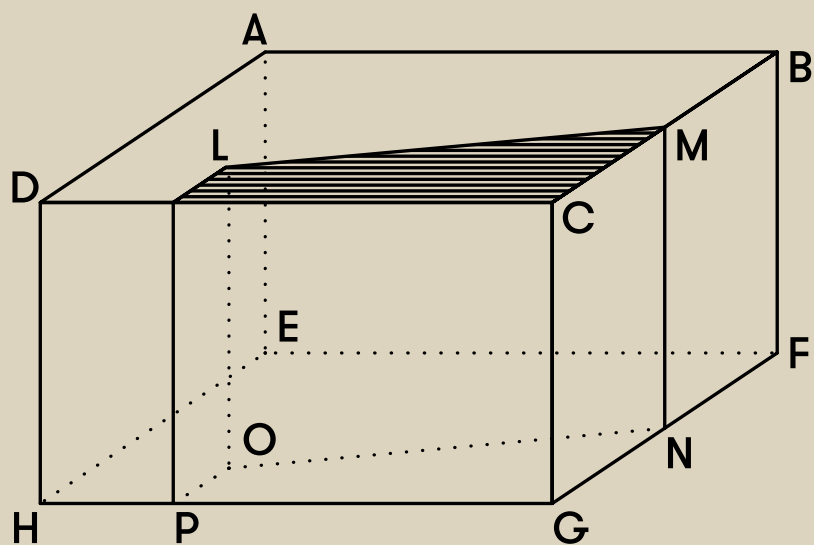
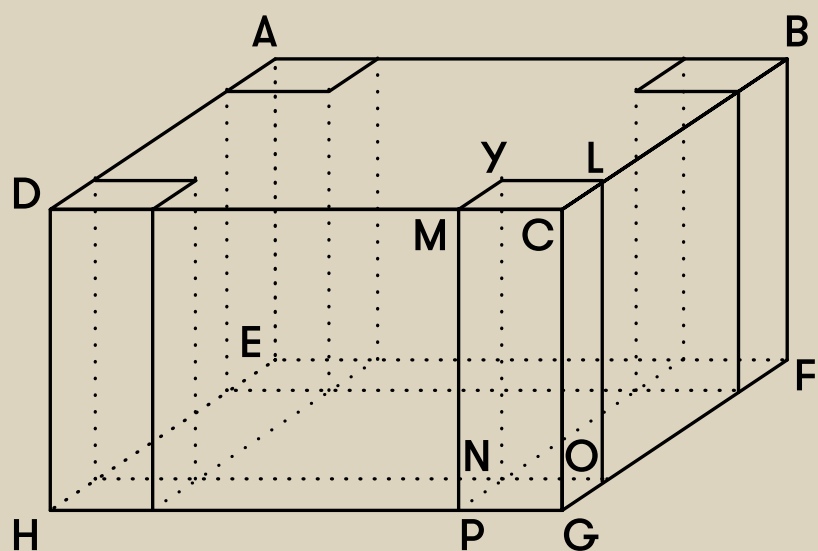


Finiture e materiali; Finishes and materials



Rivestimenti; upholstery

Blues cat.1

Composition:

32% VI 28% CO 24% PL 16% LI

Weight:

550 (app. g/lin.m)

Abrasion:

15.000 - app. # rubs acc. to the Martindale Method BS ISO 12947-2

Light fastness (ISO):

4/5 min.

Pilling: 4

Cleaning:



Blues 001



Blues 201



Blues 205



Blues 259



Blues 214



Blues 329



Blues 328



Blues 242



Blues 219

Rivestimenti; upholstery

Solid cat.1

Composition:

100% Sunbrella® solution dyed acrylic

Weight:

270 (g/m²) ISO 3801

Abrasion:

15.000 - 25000 depending on colour, nb cycles ISO 12947-2

Colour resistance:

Colour fastness UV 7/8 ISO 105B02

Colour fastness weather condition 7/8 ISO 105 B04

Colour fastness 40°C washing 5 ISO 105 C06

Colour fastness dry/wet friction 5 ISO 105x12

Cleaning:



SJA 3741 137



SJA 3737 137



SJA 5439 137



SJA 3745 137



SJA 5457 137



SJA 3905 137

Rivestimenti; upholstery

Stramacchiami cat.1

Composition:
100% PL

Weight:
600/650 (app. g/lin.m)

Abrasion:
42.000 - app. # rubs acc. to
the Martindale Method
UNI EN ISO 12947-2

Flameresistance:
BS 5852 Crib 5 BS 5852-1

Classe 1 IM

Pilling: 5

Cleaning:



stramacchiami 40



stramacchiami 35



stramacchiami 29



stramacchiami 16



stramacchiami 34



stramacchiami 33



stramacchiami 18



stramacchiami 07



stramacchiami 25

Rivestimenti; upholstery

Stramacchiami cat.1

Composition:
100% PL

Weight:
600/650 (app. g/lin.m)

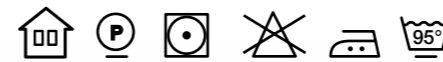
Abrasion:
42.000 - app. # rubs acc. to
the Martindale Method
UNI EN ISO 12947-2

Flameresistance:
BS 5852 Crib 5 BS 5852-1

Classe 1 IM

Pilling: 5

Cleaning:



stramacchiami 26



stramacchiami 32



stramacchiami 27



stramacchiami 140



stramacchiami 135



stramacchiami 107



stramacchiami 133



stramacchiami 132



stramacchiami 127

Rivestimenti; upholstery

Sole cat.2

Composition:
100% Trevira CS

Weight:
735 (app. g/lin.m)

Abrasion:
80.000 - app. # rubs acc. to
the Martindale Method
ISO 12947-2

Lightfastness (ISO):
4/5 min.

Pilling: 5

Cleaning:



sole 420



sole 402



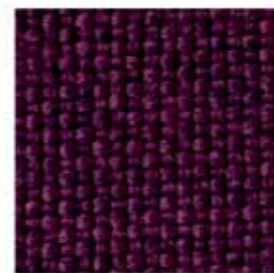
sole 07



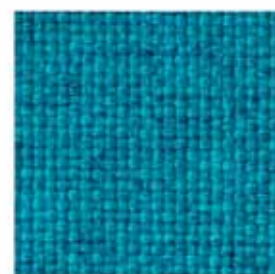
sole 417



sole 403



sole 16



sole 22



sole 11



sole 418

Rivestimenti; upholstery

Kodiak cat.2

Composition:
11% WO 24% PC 65% LI

Weight: 500 (app. g/lin.m)

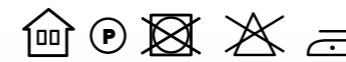
Abrasion:
18.000 - app. # rubs acc. to
the Martindale Method
ISO 12947-2

Lightfastness (ISO): ISO -105 B 02 4/5 min.

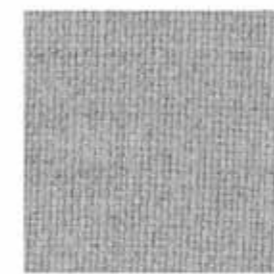
Flameresistance:
BS 5852 crib 5

Pilling: 4/5

Cleaning:



kodiak 1



kodiak 27



kodiak 5



kodiak 24



kodiak 10



kodiak 19



kodiak 13



kodiak 26



kodiak 21

Rivestimenti; upholstery

Charme cat.2

Composition:
50% PU 32% PL 18% CO

Weight:
630 (app. g/lin.m)

Abrasion:
100.000 - app. # rubs acc. to the
Martindale Method

Colour fastness to light: 5 min.

Cleaning:



charme CI102



charme CI 402



charme CI 409



charme CI 603



charme CI 405



charme CI 200



charme CI 600



charme CI 601



charme CI 301

Rivestimenti; upholstery

Texas cat.2

Composition:
100% CO

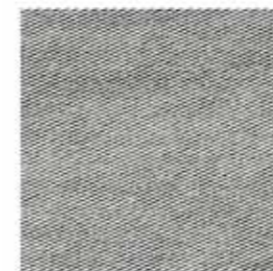
Weight:
525 (app. g/lin.m)

Abrasion:
23.000 - app. # rubs acc. to
the Martindale Method ISO 12947-2

Flameresistance:
BS 5852 Crib 5

Pilling: 3/4

Cleaning:



texas 40



texas 12



texas 31



texas 8



texas 007



texas 10



texas 36



texas 28



texas 4

Rivestimenti; upholstery

Key cat.3

Composition:
100% TREVIRA CS

Weight:
485 (app. g/lin.m)

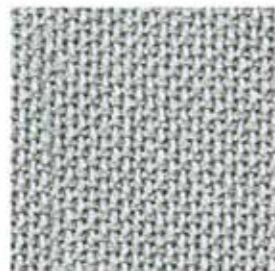
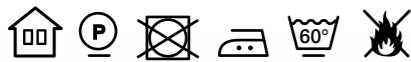
Abrasion:
50.000 - app. # rubs acc. to
the Martindale Method ISO 12947- 2

Colour fastness (ISO): ISO 105-B02 5/7

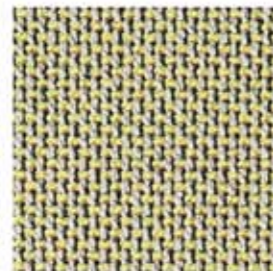
Flame retardancy:
EN ISO - 1021 - PART 1/2 DIN 4102 - 1 CLASS B1 BS 5852 - CRIB 5



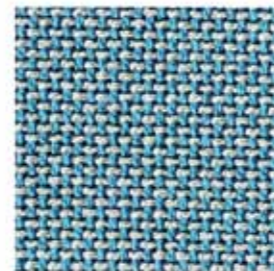
Cleaning:



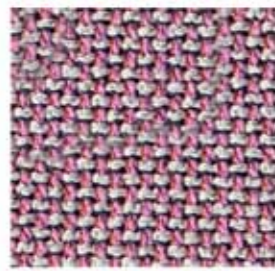
key 6821



key 6523



key 4543



key 3524



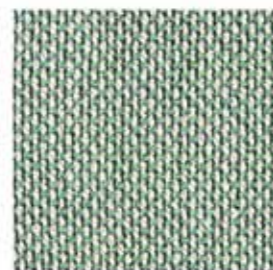
key 8800



key 3071



key 5863



key 5833



key 8600

Rivestimenti; upholstery

Solo cat.3

Composition:
95% WO 5% PA

Weight:
640 (app. g/lin.m)

Abrasion:
60.000 - app. # rubs acc. to the
Martindale Method DIN - EN - ISO 12947-2

Lightfastness (ISO): 4/8 min.

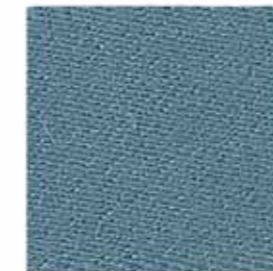
Flameresistance:
FAR - 25.853 CAL - TB 117 SECTION E DIN 4102-1 B2/EN ISO 11925-2
BS - 5852 PART1 EN 13501-1

Pilling: 4/5

Cleaning:



solo angora



solo lake



solo paradise



solo opal



solo jasmin



solo walnut



solo platane



solo prune



solo amur

Rivestimenti; upholstery

Pelle; leather **Anthea**



Anthea 101



Anthea 102



Anthea 105

Rivestimenti; upholstery

Pelle; leather **Suede**



Suede 49



Suede 45



Suede 64

Rivestimenti; upholstery

Pelle; leather



Rivestimenti; Upholstery

Pelle; leather



bianco 55



avorio 32



sabbia 39



banana 33



arancio 35



senape 49



mosto 24



cappuccino 303



cotto 41



terra 46



tabacco 44



oliva 43



inglese 22



ghiaccio 45



lavanda 36



beola 20



polvere 1549



bruno 23



nero 25

Rivestimenti; Upholstery

Pelle; leather Shine



shine natural



shine moss



shine black

Rivestimenti; Upholstery

Cuoietto; Hide Leather



BL burgan
burgan



Q2 Marrone
brown



BM nero
black



1G giallo
yellow



1P panna
cream



1E bianco
white



1S grigio
grey



Q1 havan
havana



Q7 rosso
red

Essenze; Wood species

Rovere / Frassino; Oak / Ash



RN/Hi naturale
natural



TD/HJ moka
moka



TA/HK grigio plumbeo
dark grey



TY/HL wengé
wenge



RQ/HP carbone
carbon



TB/SB tabacco
tobacco



UC/SC biscotto
biscotto



UE/SD anilina grigio scuro
dark grey aniline



UF/SE anilina grigio perla
pearl grey aniline



UG/SF anilina prugna
plum aniline



UH/SG anilina beige
beige aniline

Essenze; Wood species

Faggio; Beech



FA naturale
natural



R3 mogano
mahogany



TM moka
moka



TZ grigio plumbeo
dark grey



UB Tabacco
tobacco



TT wengé
wenge



06 noce nazionale
italian walnut



FG noce scuro
dark walnut



UD Biscotto
biscuit



BS anilina grigio scuro
aniline dark grey



BT anilina grigio perla
pearl grey aniline



BU anilina prugna
aniline prune



BV anilina beige
aniline beige



15 anilina nero
aniline black

Essenze; Wood species

Laccato; Lacquered



13 bianco opaco
white mat



01 ecru opaco
ecru mat



QE tortora opaco
dove gray mat



18 antracite
anthracite mat



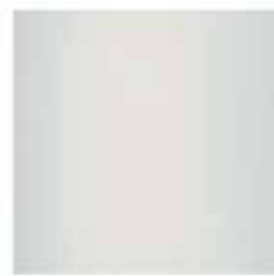
08 nero opaco
black mat



03 rosso opaco
red mat



QA bianco lucido
white glossy



02 ecru lucido
ecru glossy



RE tortora lucido
dove gray glossy



19 antracite lucido
anthracite glossy



07 nero lucido
black glossy



04 rosso lucido
red glossy

Essenze; Wood species

Essenze speciali; Special essences



HH frassino olivato naturale
olive pattern on ash



HQ frassino sbiancato
bleached ash



EV sucupira naturale
natural sucupira

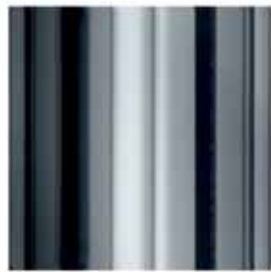


PN palissandro naturale
natural palisander



rovere taglio sega
saw raw oak

Metalli, Cemento, Marmo, Vetro; Metals, Concrete, Marble, Glass



cromato
chrome



metallo corten
corten



metallo nero
black



metallo satinato
satin



brunito spazzolato
brushed bronze



cromo nero
black chrome



cemento
concrete



ZZ marmo Biancone di Asiago
marble Biancone di Asiago



ZY marmo grigio imperiale
marble grigio imperiale



vetro trasparente
transparent float glass



metallo acidato
acid etched metal

Potocco Italy

Via Indipendenza 4,
33044 Manzano, Italy
www.potocco.it

POTOCCO
ITALY

spencer
interiors

spencer interiors
vancouver bc canada
telephone: 604.736.1378
www.spencerinteriors.ca